

State of Wyoming Corner Record

(In compliance with the *CORNER PERPETUATION AND FILING ACT*, Wyoming Statutes, 1997 Section 33-29-140 et. seq., and the Rules and Regulations of the Board of Professional Engineers and Professional Land Surveyors)

Reverse side of this form may be used if more space is needed.

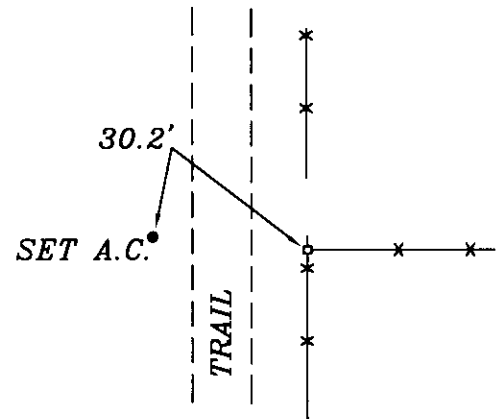
Record of original survey and citation of source of historical information (if corner is lost or obliterated). Description of corner monumentation evidence found and/or monument and accessories established to perpetuate the location of this corner. Sketch of relative location of monument, accessories, and reference points with course and distance to adjacent corner(s) (if determined in this survey). Method and rationale for reestablishment of lost or obliterated corner.

GLO RECORD: A WHITE SANDSTONE 20X8X6, MARKED W/ 6 NOTCHES ON THE SOUTH AND 2 NOTCHES ON EAST SIDE

FOUND: NOTHING

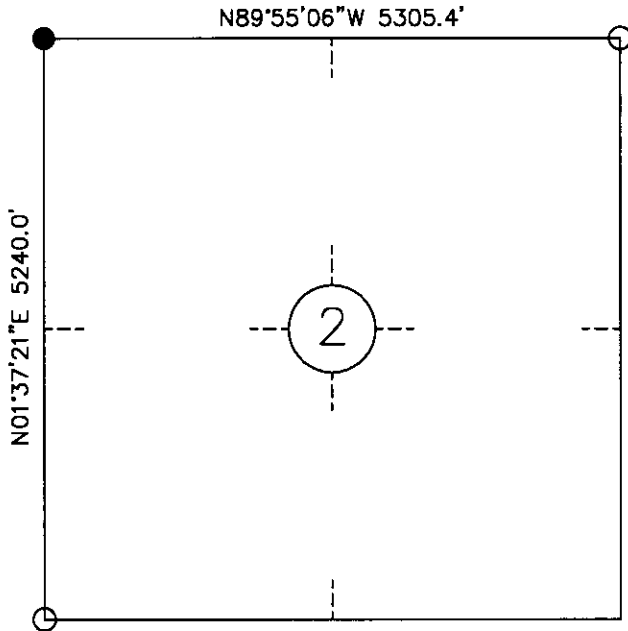
SET: 5/8" X 24" REBAR W/ 2" ALUMINUM CAP MARKED AS SHOWN
16" BELOW SURFACE

Monument Sketch

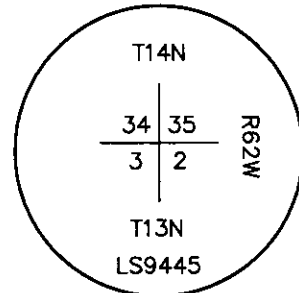


RE-ESTABLISHED BASED ON SINGLE PROPORTION
NE 2, NW 3

Monument location



Monument Inscription



Date of Field Work: 11.16.2011

Cross Index Plat

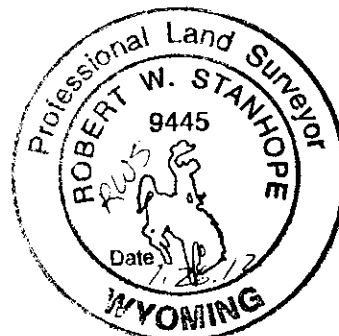
	1	2	3	4	5	6	7	8	9	10	11	12	13	14	15	16	17	18	19	20	21	22	23	24	25
A																									
B																									
C		6		5		4		3		2		1													
D																									
E																									
F																									
G																									
H																									
J																									
K																									
L																									
M																									
N																									
O																									
P																									
Q																									
R																									
S																									
T																									
U																									
V																									
W																									
X																									
Y																									
Z																									
	1	2	3	4	5	6	7	8	9	10	11	12	13	14	15	16	17	18	19	20	21	22	23	24	25

Firm/Agency, Address

ROBERT W. STANHOPE
 W.B.I. PIPELINE
 2010 MONTANA AVE.
 GLENDIVE, MT 59330
 Telephone Number: (406) 359.7200

This corner record was prepared by me or under my direction and supervision.

SEAL & SIGNATURE



RECORDED 2/03/2012 AT 10:56 AM REC# 584504 BK# 2258 PG# 845
 DEBRA K. LATHROP, CLERK OF LARAMIE COUNTY, WY PAGE 1 OF 1

Corner Name Northwest Corner Section 2, T 13 N, R 62 W, 6th P.M.

Cross-Index No.: A-17

County: LARAMIE Wyoming

SBRPEPLS/PLSW: March 1994; PLSW January 1998